

# COMPLETE HOT RUNNER SYSTEM REFURBISHMENT CAPABILITIES

Hot runner refurbishment covers a range of services aimed at restoring your mold to “like new” condition and returning your production to maximum output and highest molded part quality. MasterCARE is well equipped to handle any refurbishment project with fast turnover. Don’t wait until you’re running at 50% capacity. Pre-scheduled servicing is available. Contact MasterCARE® today to unlock your operations full potential.

## KEY BENEFITS

### OPERATE AT MAXIMUM EFFICIENCY

- Achieve highest part quality by maintaining your molds best possible resin processing parameters and gate vestige.
- Brings system back to 100% cavitation.
- Enhances color change performance.

### COST EFFECTIVE

- Reduces service and maintenance requirements.
- More economical than buying a new mold.
- Discounts on spare parts with service.

### RAPID TURNOVER

- Get back into production quickly.
- Quotes in as little as 24hrs,
- Refurbishments completed in 3-8 days.

### CERTIFIED MM TECHNICIANS

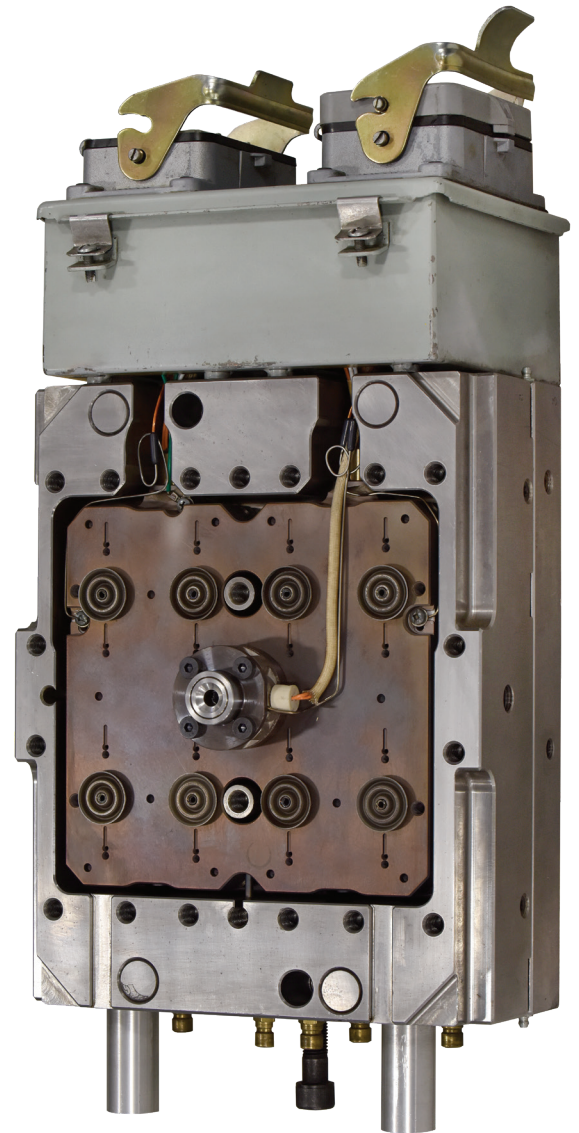
- All work is completed by those who know your system best.
- Access to original system drawings ensures service accuracy and speed.

### WARRANTY RENEWALS

- All replaced components renew their original warranties.
- Warranty extended on the system.
- Minimizes operational liabilities for greater peace of mind.

### TIME TO UPGRADE

- The perfect opportunity to upgrade your system.
- Take advantage of the latest technologies and design enhancements.
- Improve the performance of your mold even further.

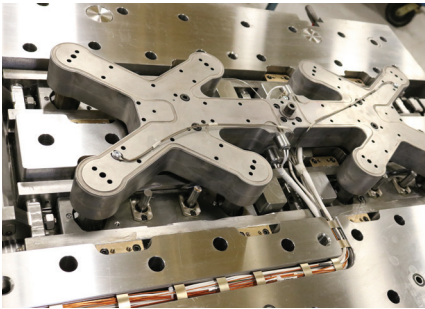


Before refurbishment

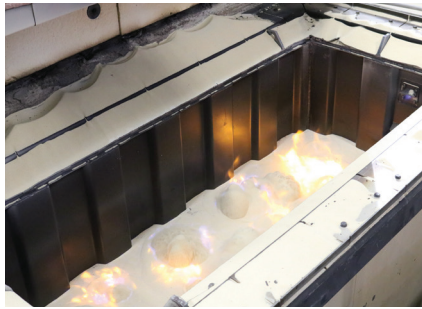
## our **COMMITMENT**

Our hot runner systems are so robust and reliable, they’re backed by our industry leading warranty. And behind that warranty, you’ll find the industries most comprehensive global support network of experienced and dedicated professionals offering help whenever you need it. Put Mold-Masters behind your business!

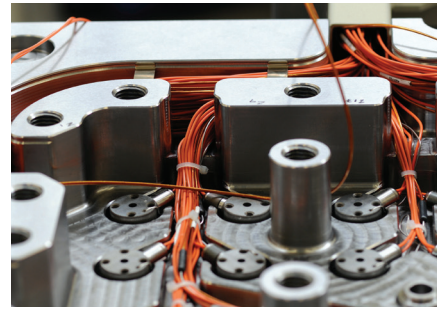
## FULL REFURBISHMENT SERVICES INCLUDE:



System inspection.



Cleaning of the manifold and melt channels using our fluidized bed ovens.



Electrical check of all heaters.



Clean water channels of mineral build-up.



Replacement of all worn components.



Pressure test water and hydraulic systems.



Dimensional check of all components.



Certification detailing all services performed.



### SERVICES

- Preventative maintenance
- Refurbishment
- Training academy
- Remote technical support
- Service and repair
- Spare parts

