

## LIGHTNING FAST, SPECIALIZED CAP & CLOSURE SYSTEM

Optimized for reliable high speed molding, Sprint systems are capable of <2 second cycle times, fast color changes, and low energy consumption. A range of special features ensures highest production quality while minimizing downtime. Now includes MasterSHIELD Technology as standard for enhanced leakage protection.

### KEY FEATURES

#### SPRINT NOZZLES

- Excellent thermal profile (10% Max Variation\*).
- Enhanced process repeatability.
- Produces high quality parts and minimizes scrap.
- **NEW** MasterSHIELD Leak Protection Technology

#### NEW COLOR CHANGE TIPS

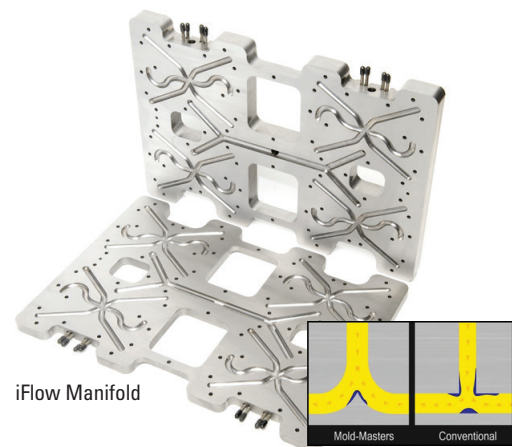
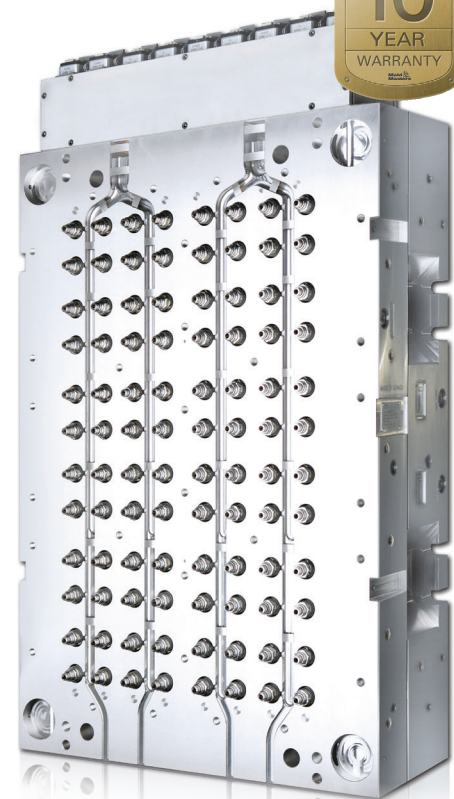
- Clears color up to 47% faster.
- Precise gate vestige.
- Industry standard gate cut-out.
- Accessible from the parting line.

#### BRAZED HEATER TECHNOLOGY

- Superior thermal balance.
- Enhances rheological balance.
- Exceptional reliability minimizes downtime.
- Eliminate spare heater costs.

#### iFLOW MANIFOLD TECHNOLOGY

- Best in-class melt management.
- Industry leading mold fill balance.
- Rapid color change performance.
- Extensive flexibility for design optimization.
- Reduced stack height.

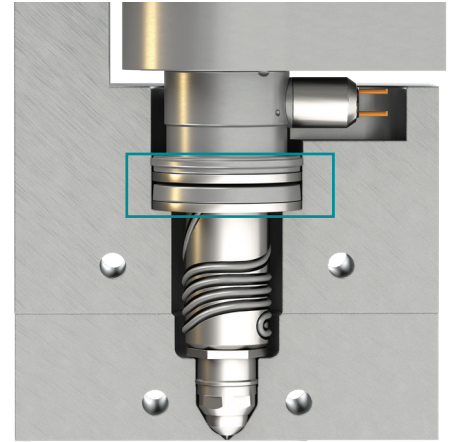


iFlow Manifold



## NEW MasterSHIELD TECHNOLOGY

- Enhanced leakage protection between the nozzle and manifold.
- Incorporates an innovative spring design.
- Pre-loads nozzle to the manifold.
- Robust design maintains seal +/-100°C (212°F) from processing temperature.
- Reliable even on cold start-ups.
- Patent pending.

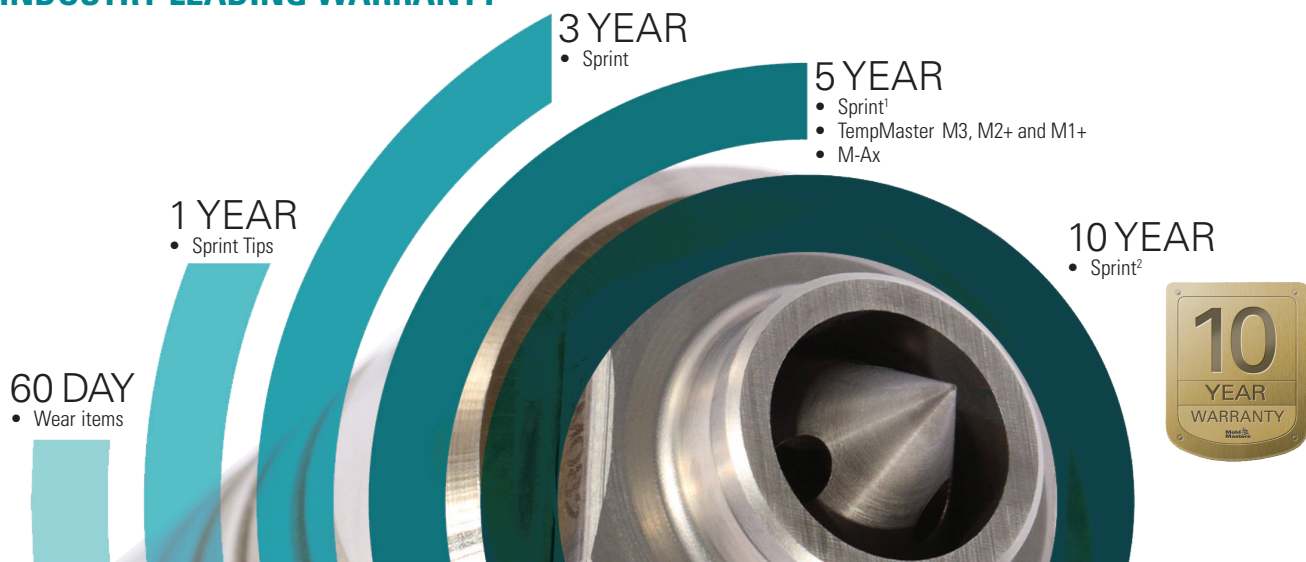


## ecoDisk

- Ceramic contact pad.
- Provides substantial energy savings.
- Greater thermal stability.
- Improves customer profitability.
- Standard in all Sprint systems.



## INDUSTRY LEADING WARRANTY



Please speak to a Mold-Masters representative for complete warranty details. Some conditions and/or limitations apply. Subject to change without notice. <sup>1</sup> Valid with the purchase of a TempMaster controller OR hot half on the same PO. Warranty limited to heating circuits of select components which may differ depending on the hot runner system. <sup>2</sup> Valid with the purchase of a TempMaster controller AND hot half on the same PO. Warranty limited to heating circuits of select components which may differ depending on the hot runner system.



## TempMaster™ M3 series

TempMaster M3, incorporating new TC-Connect Technology, allows molders to eliminate traditional TC cables from your molding cell. Recommended for all Sprint hot runner systems. Revolutionize your operation with TM-M3 and unlock your operations full potential with TempMaster.