



SmartMold

MOLD MONITORING SYSTEM



MOLD • MACHINE • FACTORY

MOLD MONITORING SYSTEM

Mold-Masters SmartMOLD is a cloud-based software platform dedicated to the plastics industry providing real-time data to drive injection molding innovation. Process data is collected from sensors embedded within the injection mold which offers feedback and insights that drive enhanced productivity. Our solution is the first step towards predictive and autonomous capabilities within your facility.

Although SmartMOLD is focused on the mold, it also has the potential to pull data from injection molding machines. SmartMOLD is compatible with any brand of equipment.

POWERED BY THE CLOUD

- Real time data.
- Accessible 24/7 with reporting and analytics.
- Ensures you always have the latest version (no manual updates required)
- Does not require customers to have their own IT team in order to support.
- Enables the path to predictive and other powerful capabilities.

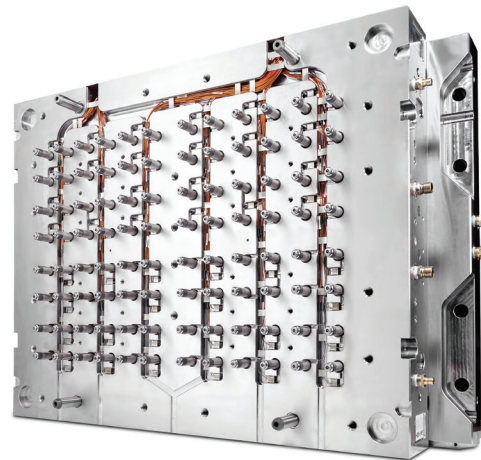


DATA SYSTEM INTEGRATION

- Pull data into existing ERP/MES systems.
- API's available for any system.
- Export data in various formats (Exel, csv, xml, net, etc).

FLEXIBLE & ECONOMICAL

- Compatible with any brand of mold and/or machine.
- Connect molds only, injection machines only or connect everything.
- Users can scale the system to their facility and budget requirements
- Only pay for what you use.



A GLOBAL SOLUTION

- Server facilities operating in several major regions.
- Compliance with local data privacy laws.
- Enhances data response times.
- Unlimited data storage.
- Global installation and technical support

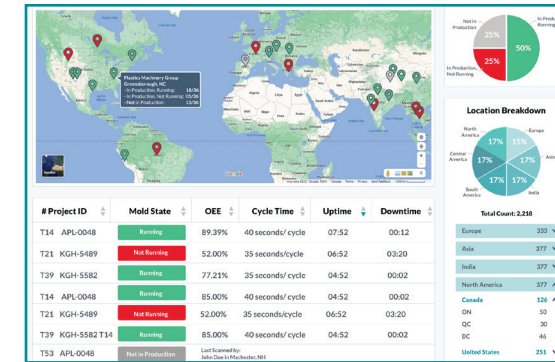
ROBUST DATA SECURITY

- Compliant with ISO 27000 and regional Laws (Chinese Internet Law, GDPR).
- Complete data privacy and confidentiality.
- Guaranteed end-to-end protection.
- Private and dedicated servers.
- Redundancy, backup and fail-over.
- Maintain 24x7 availability to your data.
- Unlimited data storage.
- Customers own their own data.
- User based log-ins to control access.

MODERN AND INTUITIVE USER INTERFACE

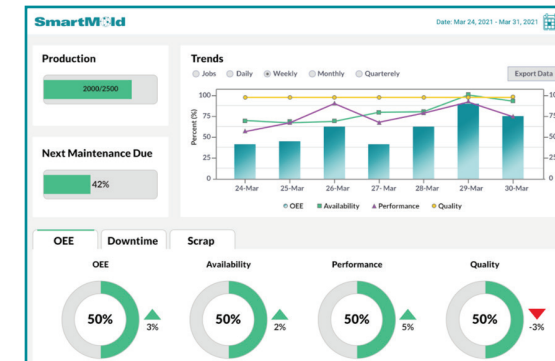
SmartMOLD features a new look and feel. Information can be viewed from the highest level or drilled down to the smallest detail. Navigation is quick to navigate and all this data remains simple to understand.

MULTI-PLANT OVERVIEW



See critical details of your facilities and molds from a global perspective. Filters allows users to focus on certain projects/regions.

INDIVIDUAL VIEW



Compare productivity shift to shift. Track downtime and scrap.

ANALYTICS & REPORTING



Visual charts makes information easy to digest. Reports can be pulled on almost anything and scheduled to be run at regular intervals.

PLANT PRODUCTION OVERVIEW



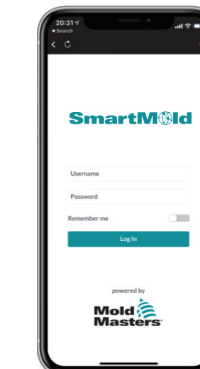
A simple high-level view with icons to quickly identify issues.

MAINTENANCE SCHEDULE & HISTORY

| TASK | INTERVAL | PROGRESS | REMAINING | DATE DUE | COMPLETED |
|-----------|----------|----------|-----------|-----------|-----------|
| Service A | 10,000 | 27% | 2,700 | 6/23/2021 | |
| Service B | 20,000 | 100% | 20,000 | DUE TODAY | ✓ |
| Service C | 30,000 | 0% | -5 days | 5/31/2021 | |

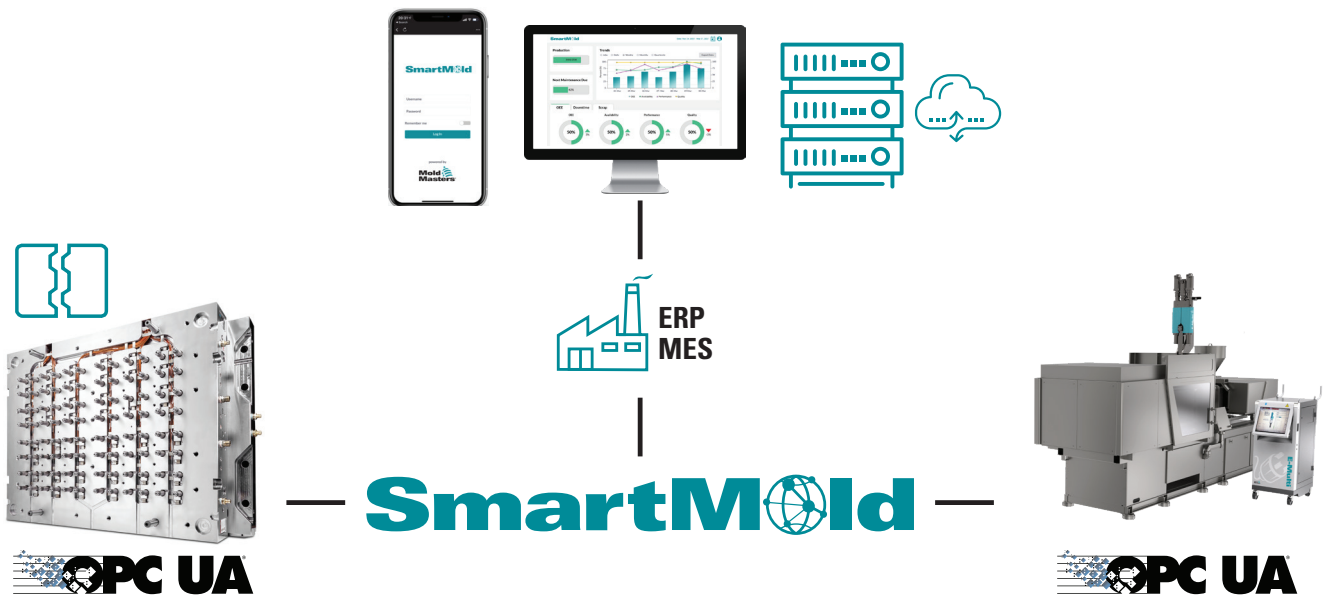
Ensure proper maintenance guidelines are followed and track what's been completed.

MOBILE APPLICATION



View production status and enter data on the go. Quickly identify and pull up equipment information. Set email/sms alerts on almost anything.

SMART CONNECTED NETWORK OPTIONS



SPECIFICATIONS

| | |
|----------------------------|--|
| Mold Sensor Options | Cycle Count/Time Mold Temp (x8) Cooling Temp Cooling Flow Humidity |
| Sensor Options | Digital / Analog |
| Communication | OPC-UA |
| Requirements | Mold Machine |
| System Connection | Ethernet |
| Requirements | Internet Connection 24V DC Power |
| Install Placement | Electrical Box |
| Dimensions (HxWxD) | 106 x 141 x 55 |

