



E-Multi[®]



THE MOST VERSATILE, ALL ELECTRIC SERVO DRIVEN, AUXILIARY INJECTION UNIT

CONSUMER GOODS



MEDICAL



ELECTRONICS



PERSONAL CARE



CAPS & CLOSURES



THIN WALL PACKAGING



PET (DRINK BOTTLES/PREFORMS)



AUTOMOTIVE



OPEN THE DOOR TO PRECISION MULTI-SHOT APPLICATIONS

Easily and economically convert any existing Injection Molding Machine to allow multi-shot capabilities. The successful E-Multi platform offers proven precision, repeatability, versatility and reliability. Compatible with a wide range of thermoplastic and LSR materials, E-Multi is ideal for a wide range of applications across any industry.

KEY FEATURES

SERVO DRIVEN

- High precision, fast, repeatable and reliable performance.
- Suitable for high tolerance applications.
- Program up to 10 injection profiles and holding pressures.
- Statistical process and production tracking.

VERSATILE MOUNTING OPTIONS

- Vertical, horizontal and custom mounting options.
- Can adapt to many requirements.
- Various feeding options available.

COMPACT DESIGN

- Preserves valuable floor space.
- Save up to 100ft² (9.3m²) of space compared to alternatives.
- Vertical installations virtually eliminate any footprint.

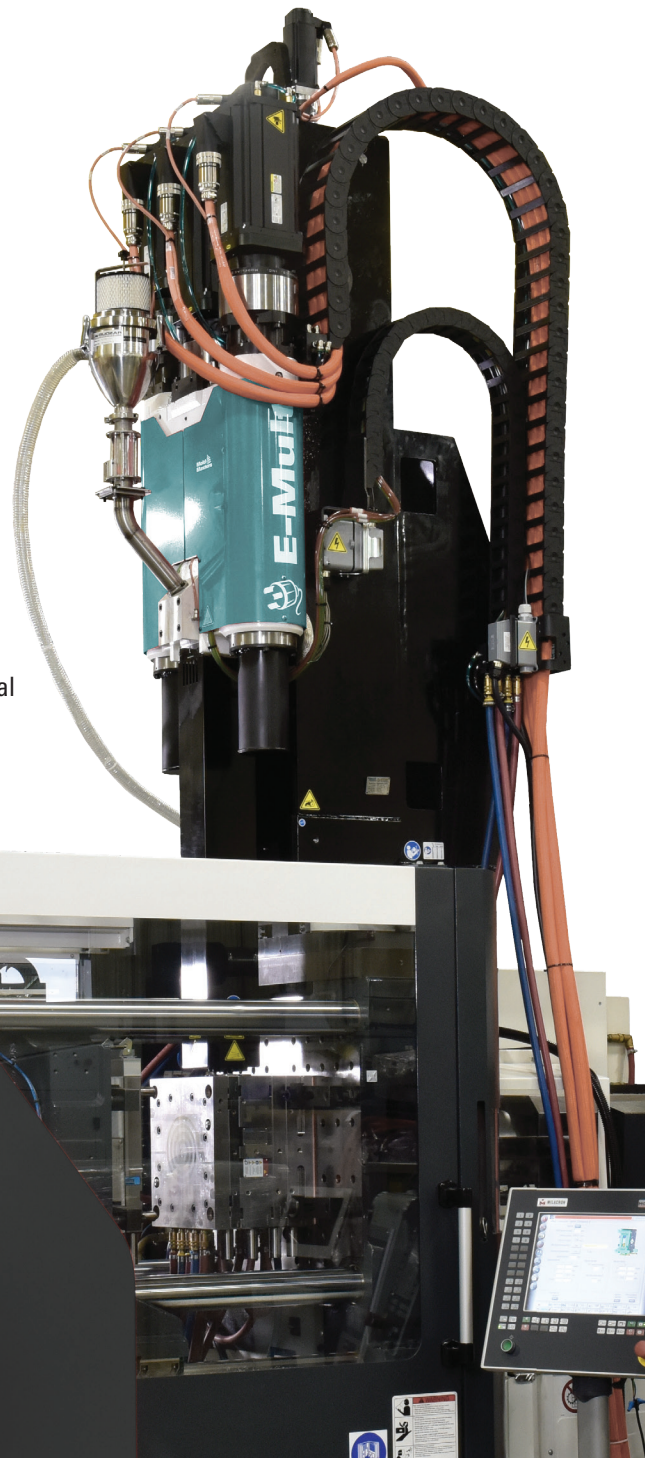
UNIVERSAL COMPATIBILITY

- Can be installed on [ANY](#) Injection Molding Machine.
- Seamless operation via IMM interface.
- Integrate robotic interface.

ALL ELECTRIC

- Energy efficient.
- Viable for clean room applications.
- Minimal maintenance requirements.

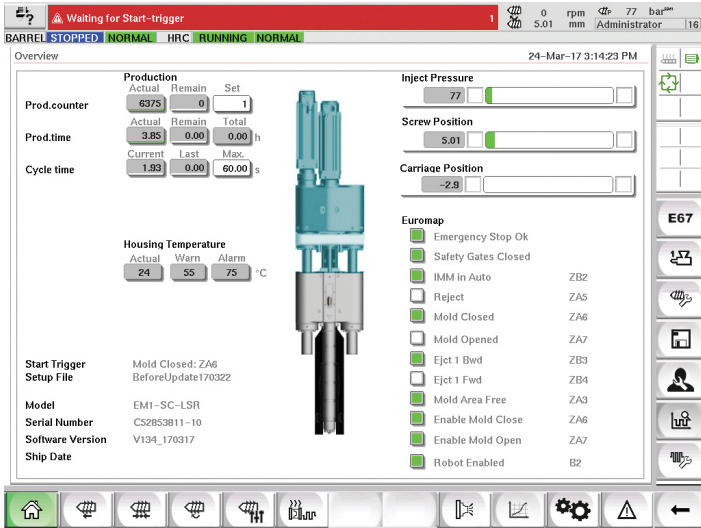
Full range of horizontal or vertical mounting options available



EXPANDABLE MULTI-FUNCTION CONTROLS

Easily integrate additional functionality into your E-Multi controller. Centralize your molding process, eliminate unnecessary equipment and save valuable floor space.

- TempMaster Hot Runner Temperature Control
- Valve Gate Control
- E-Drive Synchro Plate Control
- Rotary Table Control
- M-Ax Auxiliary Servo Control



Intuitive touch screen process controls



INTEGRATED COMMUNICATIONS



Injection Molding Machine

*E12/SPI Adapter Available

Auxiliary



Produce consistent high quality multi-colored and multi-material parts

SPECIFICATIONS

Model Number	EM1-15	EM1-30	EM2-80	EM3-200	EMR-290	EM4-550	EM5-1000
Screw Diameter	mm 14 0.55	16 0.63	18 0.71	20 0.79	22 0.87	25 0.98	28 1.10
Injection Pressure	bar 2000	1500	1200	2000	1600	1200	2000
Injection Stroke	mm 50	22,200	22,200	17,500	36,400	20,000	23,900
Shot Volume	cc 7.7	10.1	20.1	25.4	31.8	39.3	47.5
Shot Weight	g/PS 272	10.1	20.1	25.4	31.8	39.3	47.5
Max. Screw Speed	rpm 600	80	80	80	80	140	200
Max. Screw Torque	Nm 80	80	80	80	80	140	200
Screw Length	L/D 20	18	24	21	26	23	23
Max. Injection Velocity	m/s 180/390	180/380	180/380	180/380	180/380	130/260	130/260
Max. Injection Rate	c/c/s 28/55	36/72	46/92	48/92	57/113	68/137	88/177
Nozzle Touch Force	oz./PS/6 0.98/1.86	1.22/2.43	1.22/2.43	1.56/3.11	1.93/3.82	2.30/4.63	2.88/5.89
Total Length 1'	mm 1740	1340	1340	1690	1690	1945	2045
Overall Width W'	mm 390	390	390	440	440	490	490
Overall Height H'	mm 460	400	400	450	450	510	510
Weight	kg 190	157	157	177	201	201	201
Nozzle Stroke	mm 100	100	100	100	100	100	100

Notes: 1. Standard Speed / High Speed Option
 2. Shot Weights & Volume based on Polyurethane
 3. Recommended undercut can vary between 25% to 75% of the shot volume in this specification.
 4. E187 ver. 1.1.2k with DC-E12 or SP-M1-18 Version 3.3 interfacing at max. of 24VDC or 10 volts DC.
 5. Electrical - Incoming power 400-480VAC, other voltages upon request.

Due to continuous improvement, all specifications subject to change without notice.
 Customizable & Specialty Material Solutions Available
 LSP option limited to EM1-30(16 & 22)

STANDARD PACKAGE (EM1-EM4)

INJECTION UNIT	CONTROLLER
<ul style="list-style-type: none"> General purpose plastizing screw Material feed tube or hopper Oil fill kit Lifting kit 	<ul style="list-style-type: none"> 15" touch screen interface (2) RFID access cards (operator/supervisor) Machine interface cable (E67) 4m power cable (3-phase) 400V/460V 7m servo drive cable to E-Multi Remote diagnostics package (2) valve gate control
OPTIONS	OPTIONS
<ul style="list-style-type: none"> Servo carriage (for sprue break) LSR capability Compact horizontal mount stand Specialty screws Nozzle extensions (heated/unheated) Shut-off nozzles Mold mounting plate Material feed vibs tube Auto-Lube 	<ul style="list-style-type: none"> 36-zone TempMaster HR control (max) 12 valve gate control (max) TempMaster M-Ax auxiliary servo, E-Drive rotary table and index platen controls E67->SP/E12 robot IMM interface adapter
ON-SITE START-UP SUPPORT AND TRAINING	

STANDARD PACKAGE (EM5)

INJECTION UNIT	CONTROLLER
<ul style="list-style-type: none"> General purpose plastizing screw Servo carriage (for sprue break) Material feed tube or hopper Oil fill kit Lifting kit 	<ul style="list-style-type: none"> 15" touch screen interface (2) RFID access cards (operator/supervisor) Machine interface cable (E67) 4m power cable (3-phase) 400V/460V 7m servo drive cable to E-Multi Remote diagnostics package (2) valve gate control
OPTIONS	OPTIONS
<ul style="list-style-type: none"> Robust horizontal mount stand Specialty screws Nozzle extensions (heated/unheated) Shut-off nozzles Mold mounting plate Auto-Lube 	<ul style="list-style-type: none"> 36-zone TempMaster HR control (max) 12 valve gate control (max) TempMaster M-Ax auxiliary servo, E-Drive rotary table and index platen controls E67->SP/E12 robot IMM interface adapter
ON-SITE START-UP SUPPORT AND TRAINING	